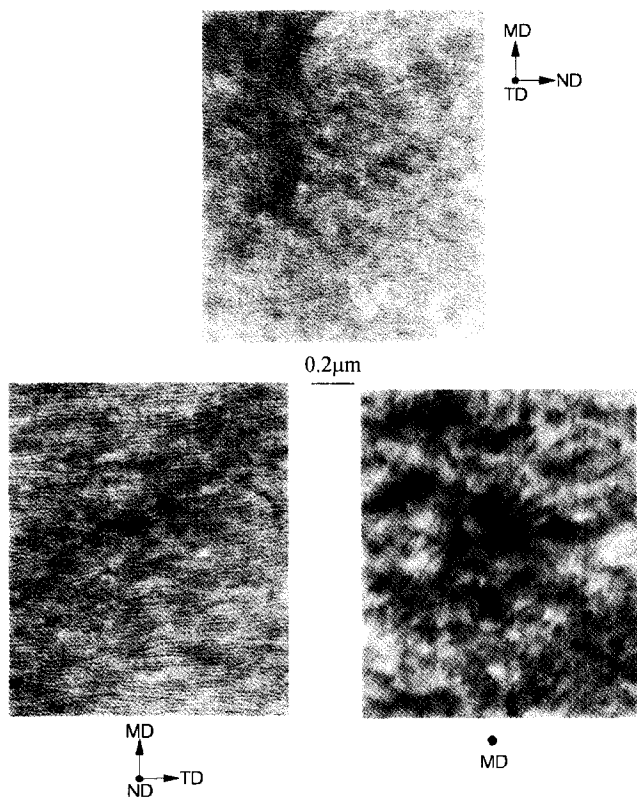


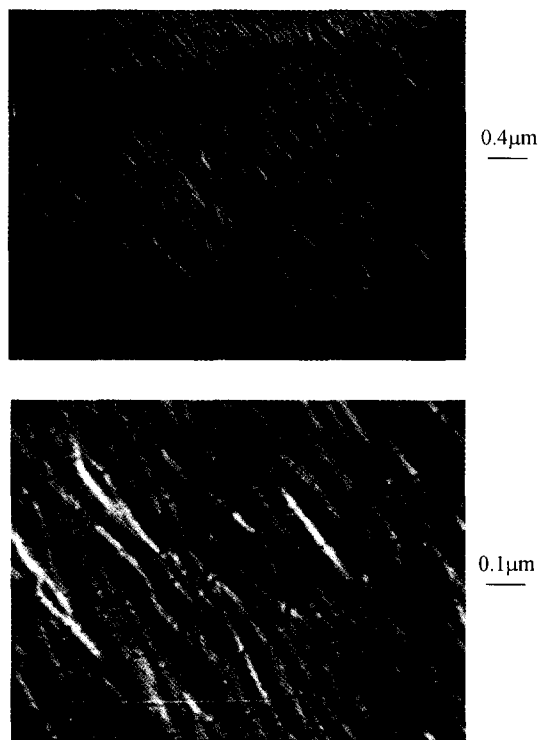
# Erratum

## Orientation determination and morphological study of high density polyethylene (HDPE) extruded tubular films: effect of processing variables and molecular weight distribution [*Polymer* 1996, 37, 4675]

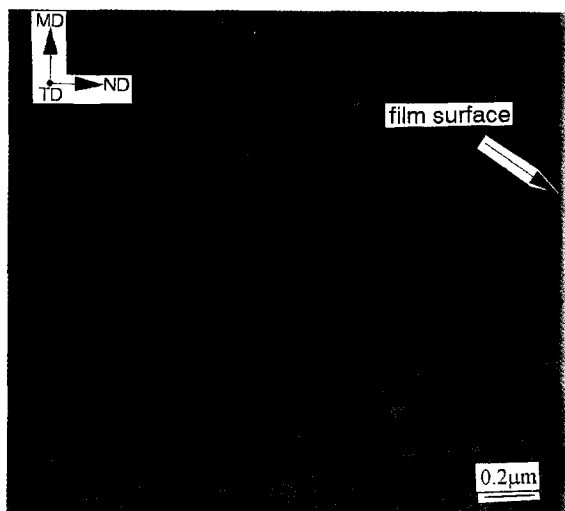
Figures 3–5, 7–9 and 16–19 of the above paper should be as follows:



**Figure 3** The TEM micrographs for the highest oriented Resin 1, sample A1. The TD, MD, and ND directions are shown as labelled



**Figure 4** The HSEM micrographs for the highest oriented Resin 1, sample A1



**Figure 5** The TEM micrograph of the highest oriented Resin, sample A1. This micrograph shows the morphology very close to the film surface

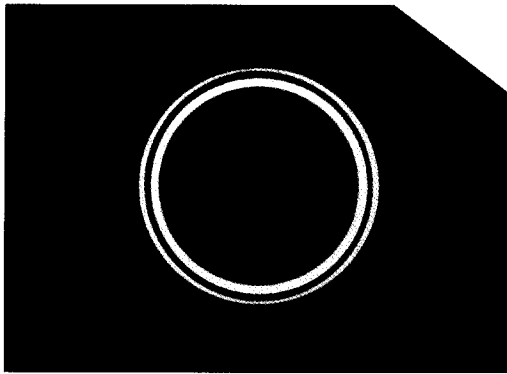


Figure 7 The WAXS diffraction pattern for the sample in Figure 3. The X-ray beam was along the MD

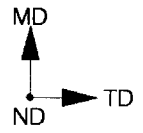
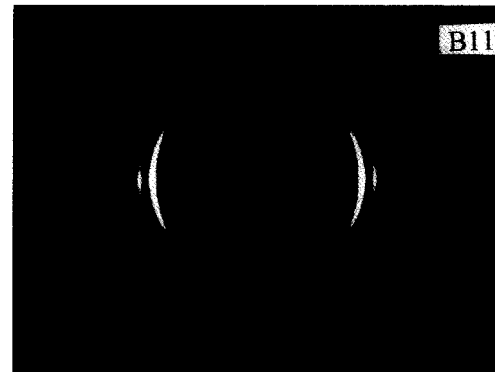


Figure 9 The WAXS diffraction patterns for samples, B1 and B11 made from Resin 2. The X-ray beam was along the ND

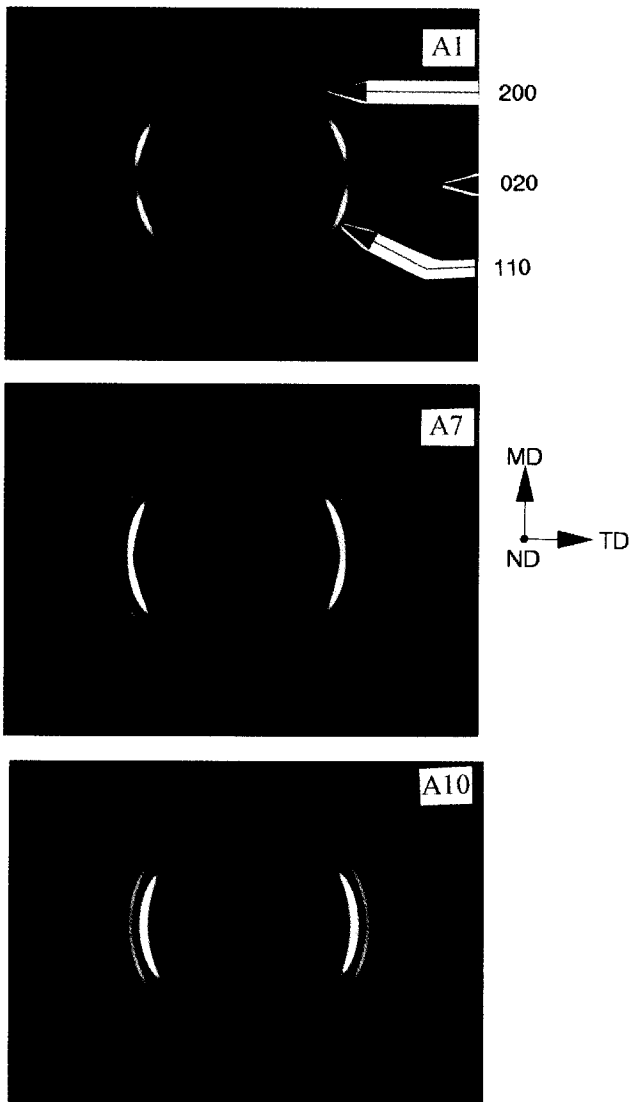


Figure 8 The WAXS diffraction patterns for samples, A1, A7, and A10 made from Resin 1. The X-ray beam was along the ND

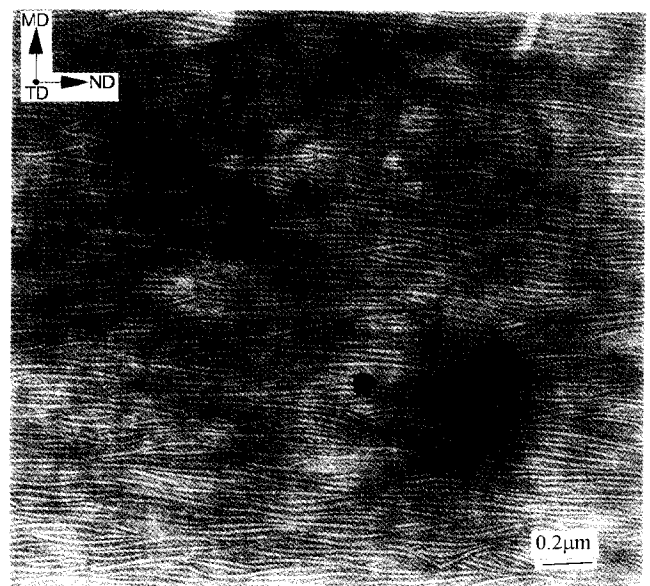
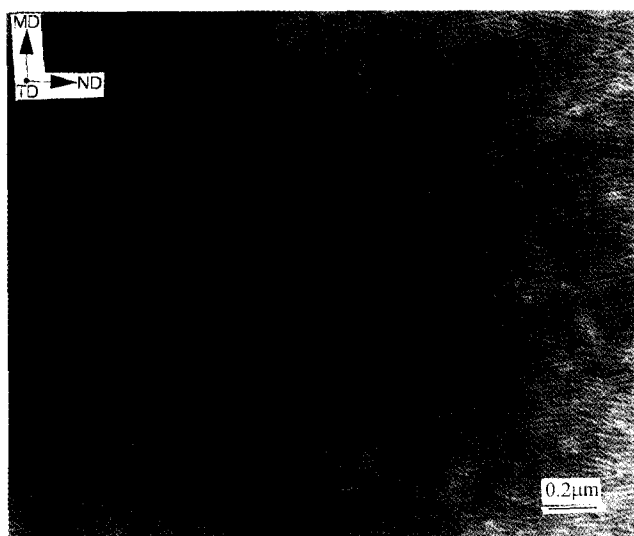
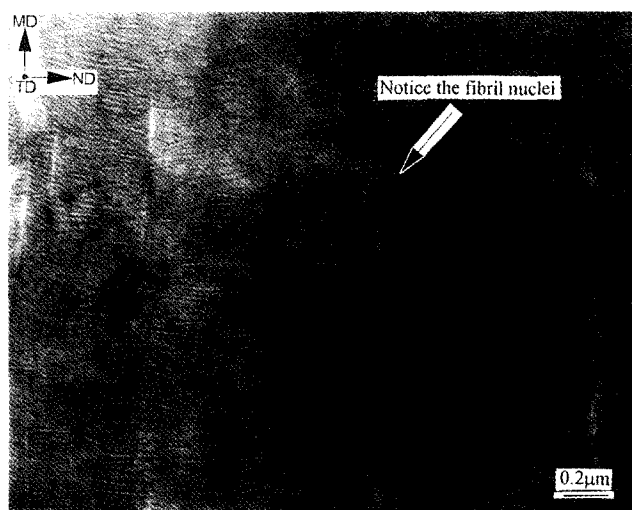


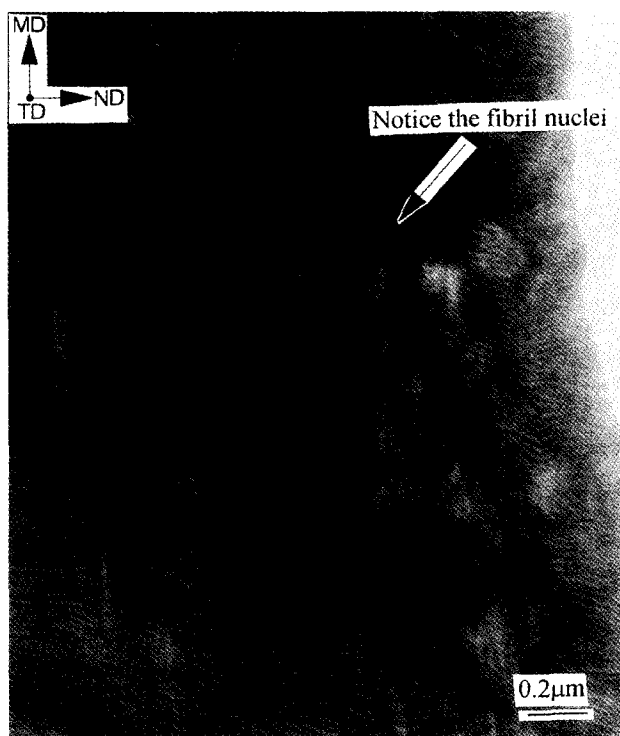
Figure 16 The TEM micrograph of the lowest oriented Resin 1, sample A1



**Figure 17** The TEM micrograph of highest oriented Resin 1, sample A10



**Figure 18** The TEM micrograph of the lowest oriented Resin 2 film—sample B1



**Figure 19** The TEM micrograph of the highest oriented Resin 2 film—sample B11